



A Reliable Power Solution Provider

Lithium Iron Phosphate (LiFePO4) Battery

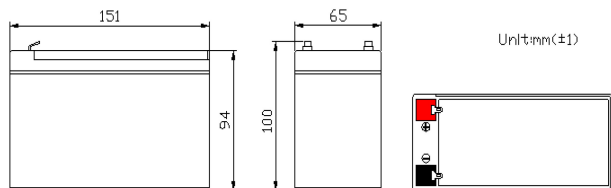
LFP12.8V9AH

Features

- ◆ Using the technology of lithium iron phosphate cell, superior safety, thousands of cycles, 100%DOD, under normal conditions
- ◆ Built-in automatic protection for over-charge, over discharge, over current and over temperature
- ◆ Maintenance free
- ◆ Internal cell balancing
- ◆ Lighter weight: About 40% ~50% of the weight of a comparable lead acid battery.
- ◆ Can be charged using most standard lead-acid charges (set)
- ◆ Compliance with IEC 61960 and IEC 62133 requirements.
- ◆ Wider temperature range:-20°C~60°C
- ◆ Relativity humidity for storage and operation between 10% and 90%, no condensation
- ◆ Storage of more than 12 months without requiring recharge (Before Storage,the capacity of battery should above 80%)
- ◆ Lifespan greater than 10 years.(Max operating time:200 cycles/year)

Application

- ◆ UPS
- ◆ Solar & Wind power system
- ◆ Golf Cart
- ◆ Electric vehicle , E-bike, E-rickshaw e.g.
- ◆ Lighting



General Specifications

Electrical Characteristics	Nominal Voltage	12.8V
	Nominal Capacity	9Ah@0.2C
	Energy	115.2Wh
	Internal Resistance	80≤mΩ
	Cycle Life	>2000 Cycles @ 0.2C Charge/Discharge at 100%DOD,End of Life 70% Capacity.
	Months Self Discharge	≤3.5% per month at 25°C
Standard Charge	Charge Voltage	14.6±0.2V
	Charge Mode (CC/CV)	At 0°C~45°C temperature, charged to 14.6V at a constant current of 0.2C5A, and then,changed continuously with constant voltage of 14.6V until the current was not more than 0.02C5A.
	Charge Current	1.8A
	Max.Charge Current	4.5A
Standard Discharge	Discharge Current	1.8A
	Max. Continuous Current	9A
	Max.Pulse Current	20A(<3S)
	Discharge Cut-off Voltage	10.0V
Environmental	Charge Temperature	0°C to 45°C(32°F to 113°F) @60±25% Relative Humidity
	Discharge Temperature	-20°C to 60°C(-4°F to 140°F) @60±25% Relative Humidity
	Storage Temperature	0°C to 45°C(32°F to 113°F) @60±25% Relative Humidity
	Water Dust Resistance	IP55
Mechanical	Cell & Method	IFR26650 N30,4S3P
	Plastic Case	ABS
	Dimension(L*W*H*TH)	151*65*94*100mm
	Weight	Approx. 1.34Kg
	Terminal	F2

PAC Technology Co.,Ltd

Add: No.9009, Longxiang Avenue, Longgang District, Shenzhen, 518172, China