



铂可电池  
PAC Battery

# Portable Power Station T200

TEL: 0086-755-32879641

E-mail: [sales@pacbattery.com](mailto:sales@pacbattery.com)

# CONTENTS

- 1 Introduction
- 2 How To Use
- 3 Application
- 4 Global Market

The background features a large teal arrow pointing from the left edge towards the right. The arrow is composed of two main parts: a triangular head on the left and a rectangular body on the right. The text '01. Introduction' is centered within the rectangular body of the arrow.

# 01. Introduction

# T200- Pictures

## T200: With 200W AC Inverter



# T200-Dimension & Weight



**Length\*Width\*Height\*Total Height :**

210\*139\*123\*180MM

=8.27\*5.47\*4.84\*7.09Inch

**Product Weight:**

2.4KG

=5.3Lbs

# T200-Specifications

## 222Wh/200W Portable Solar Power Station: T200

- Battery: Lithium ion battery
- Battery Capacity: 3.7V, 60000mAh=222Wh
- Inverter: Modified Sine Wave-200W
- Charge Controller: MPPT for Higher Efficiency Solar Charging
- 1\*AC Output: 200W, 110V/220V (**Customized**)
- 4\*DC Output: 9-12.6V/10A (15A Max)
- 2\*USB Output: 5V/2.4A
- 1\*USB Quick Charge QC3.0: 18W
- 1\*Type C Quick Charge QC3.0: 18W
- LED Lighting: Flashlight/Blink/SOS
- Input: AC Adapter/Car Charger/Solar Panel



# T200-Accessories



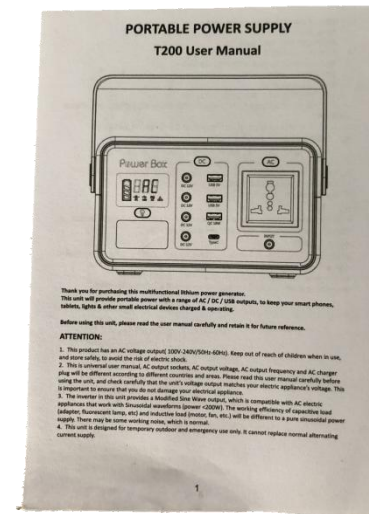
AC Adapter



Cigarette Lighter Adapter



Car Charger



User Manual



# T200-AC Sockets(MOQ500)

## Lithium Power Generator T200

### For Different Countries



### AC Sockets for Different Countries:

- USA Socket
  - Japanese Socket
  - European Socket
  - UK Socket
  - Australian Socket
  - Universal Socket
- (All sockets can be customized)



## T200-Various Colors(MOQ500)



**Standard Color: White+Black**

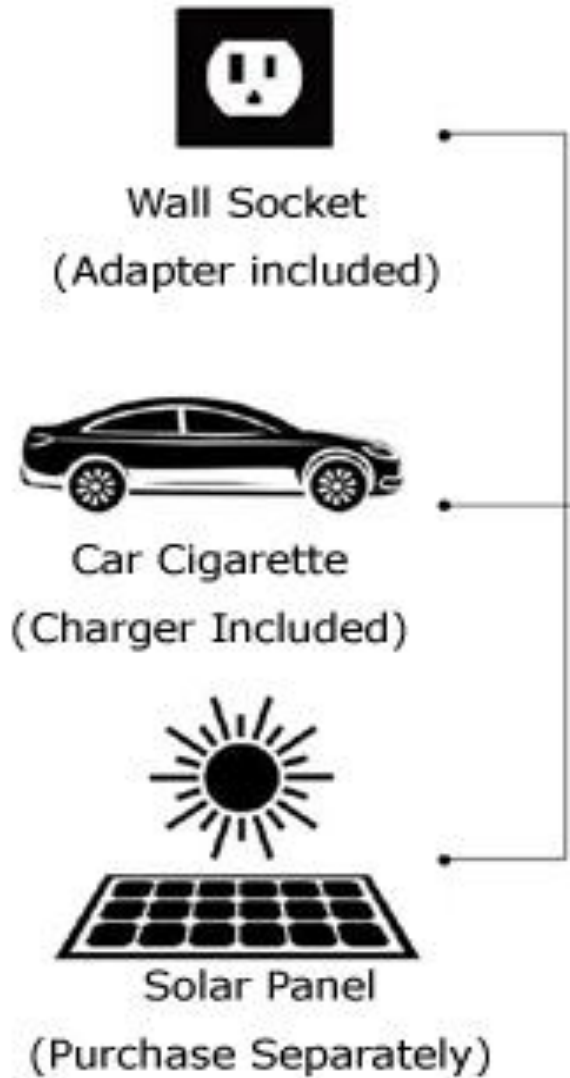
**Colors: can be customized upon your requirements**

The background is white with a large red arrow pointing from the left edge towards the center. The arrow is composed of two overlapping red shapes: a triangle on the left and a larger, more complex shape on the right that resembles a stylized arrowhead or a chevron. The text "02. How To Use" is centered within the red arrowhead shape.

## 02. How To Use

# How To Charge This T200?/Input

## 3 Ways to Recharge



## 3 Ways of Charging in

1)AC Adapter: 15V3A

- Fully Charged Time: 7-8 hours

2)Car Charger: 13.6V1.8A

- Fully Charged Time: 14 hours

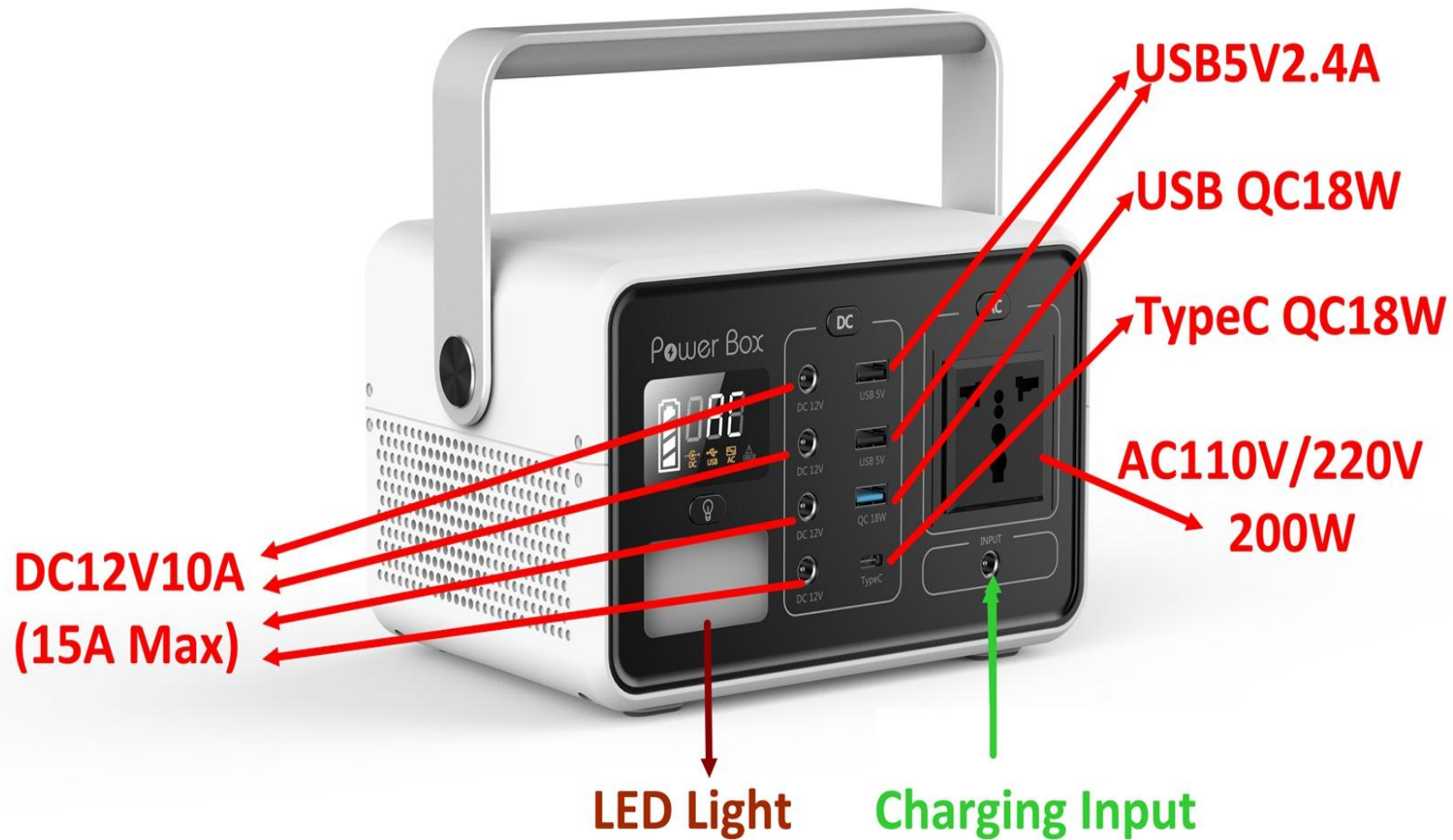
(3)Solar Panel: 16V 50W (Recommended)

- Fully Charged Time: 8 hours(Full Sun)

- Fully Charged Time: 14 hours(Normal≈2Days)

# Multi-Functions

## Lithium Power Generator: T200



### Outputs:

- 1.AC: 200W 110V/220V
- 2.DC: 9-12.6V 10A (15A Max)
- 3.USB: 5V 2.4A
- 4.USB QC3.0: 18W
- 5.Type-C QC3.0: 18W

### Input:

15V3A

### LED Light:

Light/Blink/SOS

# LED Lighting

## Lithium Power Generator T200: LED Flashlight



## LED Lighting

- Flashlight: 55.8hours
- Blink: 111.6hours
- SOS: 132hours



# What Can T200 Do For You?

## Lithium Power Generator: T200 For home Appliances



Computer

180W



Light

10W



Car Vacuum cleaner

120W



Car Air Purifier

120W



Digital Devices

10-15W



Car Refrigerator

50W



Television

80W



Electric Fan

50W

**It can charge for different devices:**

### 1.AC Output:

- 60W 32" TV: 3hours+
- 60W Laptop: 3hours+
- 60W Standing Fan: 3hours+
- 40W CPAP: 4.7hours+
- Done: 3-5times

### 2.DC Output:

- 60W Car Fridge: 3hours+
- 60W Car Vacuum Cleaner: 3hours+
- 90W Car Air Compressor: 2hours+
- DC5W LED Bulbs: 37hours+
- 24W LED Tube: 7hours+

### 3.USB Output:

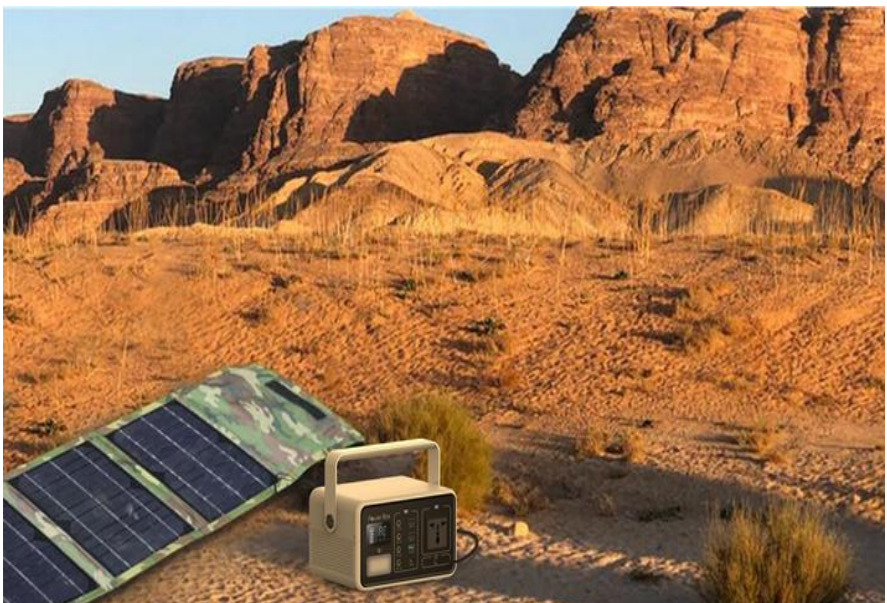
- Iphone 8-Plus: 15times+
- Ipad Pro: 6times+
- GoPro: 35times+
- Camera: 14times+
- Bluetooth Speaker: 50times+



The background features a large orange arrow pointing from the left edge towards the right. The arrow is composed of two main parts: a triangular head on the left and a rectangular tail on the right. The text '03. Application' is centered within the rectangular tail of the arrow.

## 03. Application

# For Outdoor Activities



**Outdoor Activities:**  
Camping    Traveling  
Climbing    Fishing  
Hiking    Hunting  
Adventure    Business



# For Caravan



**Caravan:**  
RV  
Camper Van  
Yacht





# For Emergency Backup



**Emergency Backup:**  
Power Shortage  
Power Shut-Down  
Typhoon/Hurricane  
Earthquake/Disaster





For Street Vendor



**Night Market:**  
Street Vendor  
Night Market



Night Market



**For CPAP**



**CPAP/BIPAP:**  
CPAP  
Medical  
Rescue



# For Drone

## Application: For Drone/UAV Charging



**Drone/UAV:**  
Drone Charging  
Enthusiast Party

# For Home Power



**Home Power:**  
Daily Power Supply  
Rural Area  
Remote Area  
Island



## 04. Global Market

# Global Market



## Global Market:

Europe/North America/Australia: Outdoor Camping, Caravan, Hiking...

Africa/India: Power Failure, Home Power...

East-Asia: Street Business...





**THANK YOU**

